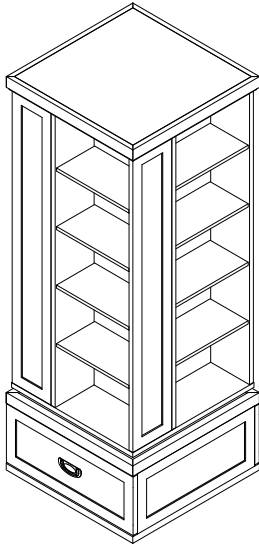




ASSEMBLY INSTRUCTION INSTRUCTION D' ASSEMBLAGE

ITEM NO: B2024BU-17SW / B2024GY-17SW / B2024WH-17SW
SWIVEL BOOKCASE/ BIBLIOTHÈQUE PIVOTANTE



Thank you for purchasing this product. Please take time to read and follow the instructions below. Check that you have all parts and hardware before assembly. Parts apparently missing are often found in the packing materials. If you do not have all the parts listed, have your dealer contact us and they will be sent to you immediately.

Merci d'avoir acheté ce produit. Veuillez lire et suivre les instructions ci-dessous. Vérifiez avant le montage que vous avez toutes les pièces et fixations. Les pièces qui semblent manquer se trouvent souvent dans les matériaux d'emballage. Si vous n'avez pas toutes les pièces de la liste, demandez à votre détaillant et nous vous les enverrons immédiatement.

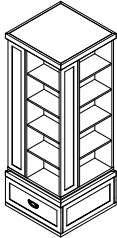
⚠ It is recommended to install protective pads under all legs and supports to avoid damage or scratches when placing furniture on a wood floor or other hard surface, and to limit indentation and prevent discoloration if placing on carpet.

⚠ Il est recommandé de placer des coussins protecteurs sous tous les pieds et toutes les bases des meubles pour éviter d'endommager ou d'égratigner les planchers en bois ou autres surfaces dures, et pour limiter l'empreinte et empêcher la décoloration quand les meubles reposent sur la moquette.

⚠ Hardware may loosen over time. Periodically check to make sure all connections are tight. Re-tighten if necessary.

⚠ Le matériel peut se desserrer au fil du temps. Vérifiez périodiquement que toutes les connexions sont serrées. Serrer à nouveau si nécessaire.

PART LIST / LISTE PIÈCES

NO	SKETCH	DESCRIPTION	Q'TY
A		SWIVEL BOOKCASE/ BIBLIOTHÈQUE PIVOTANTE	1 pc

WARNING

TIP-OVER HAZARD

This unit is designed to swivel, to prevent severe injury or death from tip-overs.

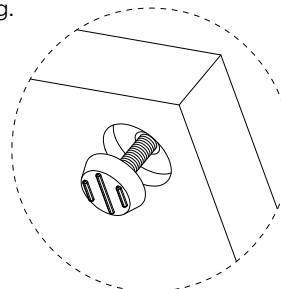
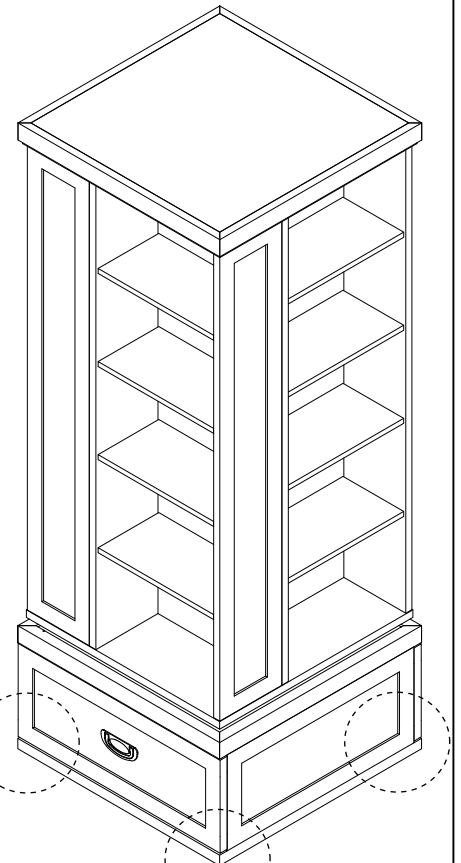
- ALWAYS place the heaviest items on the bottom shelves and in the drawers.
- NEVER allow children to climb, stand, or hang on shelves, drawers, or any part of the unit.
- NEVER open more than one drawer at a time.
- Use only on a flat, level, and firm surface. Avoid placing on soft surfaces like carpet.
- DO NOT place a TV or monitor on this product.

CAUTION

MOVING PARTS HAZARD

The swivel mechanism creates pinch points between the rotating unit and the stationary base

- ALWAYS keep hands and fingers away from the gap while swiveling.
- CLOSE SUPERVISION is required when children are near the product during movement.
- Do not swivel the unit forcefully or beyond its intended range of motion.
- Ensure the swivel path is clear of obstacles before rotating.



Leveler/
Niveleur